

S P R I N G / S U M M E R C A T A L O G U E

TWENTY *Eleven*

BEACH
Bliss

TRULY BLUELY
Heavenly

A MOST
Apposite

Green Gate
COPENHAGEN



16



4



34



24



10



46



48



04 **FAY AND GINGER**
Can you really be regal and rustic at the same time?

10 **KRISTINE AND WENDY**
Brunch al fresco and beach all afternoon!

24 **MAGGIE**
A most apposite attraction!

36 **MARTHA AND PEGGY**
Perfect for those long strawberry-flavoured days.

44 **BELLA VINTAGE**
Classic Greengate design. Beige is Bellissimo!

48 **FABRICS**
All your favourite Greengate patterns waiting for you.

A stretch of grass, a glimpse of shimmering ocean and *just* the right amount of shade are all it takes to get whisked away into a fairy tale Summer's garden party.

Decamp outdoors with the latest Greengate Fay and Ginger collection, and you have the setting for a positively *regal* afternoon.

Fay and Ginger are a delightfully simple combination. Both were inspired by designs from Greengate's priceless archive of French pattern journals, brimming with hand-painted designs from nature. Many of these designs were destined to feature on the most sought-after fabrics of 1880's France. Many others were to lie untouched, until when, more than 100 years later, the Greengate design team once again were to open the books and revisit Wonderland.

TRULY, BLUELY *Heavenly*





Each of the archive patterns in the journals are accompanied by a lovingly detailed, hand-inscribed direction as to colour schemes, printing methods and an occasional quirky comment. The Fay collection incorporates some of these notes into the new designs, as a salute to those talented craftspeople who have given us so much inspiration, long, long after they put down their paint brushes.

The result is a crisp, bold design which marries the richness of the original designs with the sensibilities and aesthetics of today. The royal blues and crisp whites lend it a faintly aristocratic atmosphere, while the lightness of touch and wholesome detail make it perfectly harmonious in a rustic country farmhouse.



1 Quilted cushion Lina blue w. app. 40x40 cm.



2 Quilted cushion Fay blue w. app. 40x40 cm.



3 Boxcushion removable cover Fay blue 40x40 cm.



4 Scarf linen blue and beige 50x190 cm.



5 Quilted cushion Ginger blue 40x40 cm.



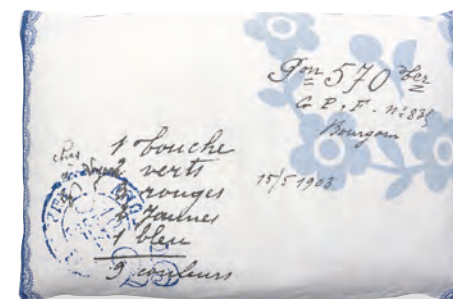
7 Elephant Ida blue H: 22 L: 36 cm.



8 Melamine plate Fay white D: 20 cm.



6 Quilt Ginger blue 140x220 cm. Machine made. Backside Lina blue.



9 Cushion cover Fay white 40x60 cm.



10 Quilted cushion Ginger blue 50x50 cm.



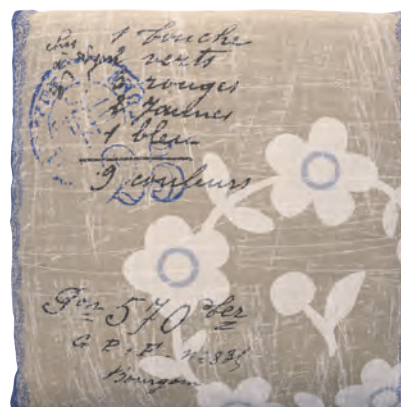
11 Grill glove Ginger blue.



12 Melamine mug Fay white & blue H: 10 cm.



13 Melamine Bowl Fay white 40x40 cm.



14 Cushion cover Fay linen 50x50 cm.



15 Alarm clock Fay white H: 12 cm.

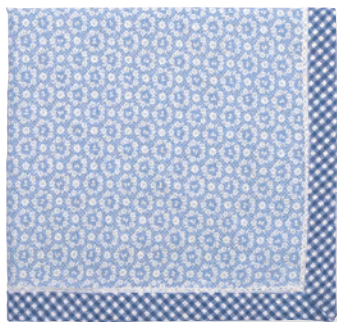


16 Tin set of 3 Ginger blue. Square. L: 15x12x12 cm.





1 Apron Ginger blue & Fay white. One size.



2 Tablecloth Fay blue 150x150 cm.



3 Bread basket Ginger blue H: 13 D: 23 cm.



4 Latte cup Fay white & blue. Spoon Fay blue
Latte cup H: 9 cm & spoon L: 15,5 cm.



5 Jug Fay white
0,5 L H: 11,5 cm.



6 Dinnerplate Fay white D: 25 cm
Plate Fay white D: 20,5 cm.



7 Bread basket napkin Fay blue, Ida blue &
Ginger blue 40x40 cm.



8 Egg cup Fay white H: 6,5 cm.



9 Soup bowl Fay white
D: 15 cm.



10 Utensil Jar Fay white 14,5x12x11,5 cm.



11 Cutlery Fay blue spot, dark blue 16 pcs.



12 Paper napkin Fay white 20 pcs.



13 Table runner Fay blue 70x180 cm.



14 Jug Fay blue 1 L. H: 19,5 cm.



15 Tea towel Fay white, Ginger blue, Ida blue &
Fay blue 50x70 cm.



Fay and Ginger combine effortlessly to make a hugely diverse range of objects and designs both versatile and coordinated. Perhaps the most pleasing thing about the collection is its ability to appear both formal and carefree, depending on the surroundings. The crisp whites and royal blue tones contrast beautifully with both the green lawns of a garden, the brown wooden fixtures of a farmyard kitchen, or even a formal dining room.





School's out – so it's brunch outside! When the Northern Sun finally submits to a near full-time shift, it's time to laze back and watch it labour across the vast sky. Why, it can even dry your dishes for you while you wait.

But a carefree *al fresco* bite doesn't have to be slap-dash. Serving up a little Wendy and Kristine Stoneware helps turn brunch into a banquet for the senses.

Kristine's principal flower design is also based on another of the exquisite hand-painted designs from our 1880 archives. The new colourways give it that unmistakable Greengate touch – a beautiful blend of craft heritage with contemporary sensibilities. But it is the introduction of the lace design that gives this new collection such a delicate yet carefree feel.





1 Salad Cutlery Kristine/
Red spot.



2 Mug Wendy white
H: 9,5 cm.



3 Egg cup Spot pale blue & Wendy white H: 6,5 cm.



6 Tea towel Asta pink, Kristine pale pink,
Kristine pale blue, & Fay pink 50x70 cm.



4 French bowl Wendy white large D: 13,5 cm
& small D: 10 cm.



5 Baking cupcake Wendy pale blue D: 5 cm.



7 Jug Wendy white 1 L H:16 cm.



8 Cup/Saucer Spot pale blue & Wendy white H: 8,5 cm.



9 Latte cup Spot pale blue & Wendy white H: 9 cm.



12 Spoon Spot pale blue L: 15 cm.



10 Tablecloth Kristine pale blue
145x270cm.



11 Plate Spot pale blue & Wendy white D: 20,5 cm.



13 Paper napkin Wendy pale blue 20 pcs.



14 Placemat Kristine pale blue 46x34 cm.



15 Bread basket napkin Kristine pale pink, Asta pink,
Kristine pale blue & Fay pink 40x40 cm.



16 Cutlery Kristine/Red spot 16 pcs.



17 Jar Wendy white
H: 20 cm.



18 Utensil Jar Wendy white
14,5x12x11,5 cm.



19 Salad bowl Wendy white D: 30 cm.



20 Tablecloth Fay pink 150x150 cm.
Asta pink 145x270 cm.



1 Quilted cushion Asta pink 40x40 cm.



2 Quilted cushion Wendy blue 40x40 cm.



3 Quilted cushion Fay pale blue 40x40 cm.



4 Alarm clock Martha white H: 12 cm.



5 Totebag Wendy pink 30x42 cm. Also in small 30x34 cm. Totebag Fay pink 30x34 cm.



6 Bathmat Star pale blue 50x80 cm.



7 Quilted beachmat Wendy blue 70x180 cm.



8 Quilted cushion Kristine pale blue 50x50 cm.



9 Tin boxes Square. Kristine pale blue. L: 15x12x12 cm. set of 3.



10 Quilted cushion Wendy blue 50x50 cm.



11 Quilt Kristine pale blue 140x220, 180x230 cm & 250x260 cm. Machine made. Backside Asta blue.



12 Quilted dinnermat Kristine pale blue 40x50 cm.



13 Quilt Wendy blue 140x220 & 180x230 cm. Machine made. Backside Asta blue.





After brunch, it's time to stroll down to the beach hut in Rungsted and contemplate a paddle. But there's no rush to get wet. First it's time to drink in the atmosphere which appeals directly to the imagination. In fact, just next door is where Karen Blixen lived and wrote much of her best novels, including *Out of Africa*. We can't be certain, but she may well have frequented this hut for creative inspiration – just as we do – gazing out across the Sound between Denmark and Sweden.

The jaunt along the coast makes packing light a good option – towels and light refreshments are a must – but why should the Kristine and Wendy designs have to stay at home on the brunch table? Well, they don't. Greengate's new collection even comes in the form of paper cups and plates, towels, picnic bags – everything you might need for a mobile excursion.





1 Melamine Dinner plate Wendy green & Wendy pale pink D: 25 cm.
Melamine plate Wendy green & Wendy pale pink D: 20 cm.



4 Cosmetic bag Fay pink & Wendy pink M 20,5x13,5x9 cm.



7 Pencilcase round Wendy pink & Fay pink L:22 cm.



14 Towel Kristine pale blue, Kristine pink & Wendy blue 90x140 cm.



2 Key ring Round Wendy pink D: 5,5 cm, Cupcake Fay green 10x7 cm.



5 Purse Fay green w. emb. Wendy pink 20,5x12,5 cm.



8 Purse Fay pink. 14x10,5 cm.



10 Luggage tag Wendy pink 12x25 cm.



11 Melamine bowl Wendy pale pink D: 14 cm.



9 Cooler lunch bag Wendy pink 21x16x10 cm.



13 Cosmetic bag Wendy pink L 25,5x16,5x10 cm.



12 Melamine bowl Wendy. Set of 3. Large size: H 13,5 cm, D 26,5 cm.



15 Melamine mug Asta pink, Wendy pale pink & Wendy green H: 10 cm.



16 Beach bag Wendy pink 33x34x15 cm.



3 Melamine tray Wendy green round D: 36 cm.





1 Quilted cushion Wendy pink 50x50 cm.



2 Canvas bag Carmen green 30x40x18 cm.



3 Quilted cushion Kristine pale pink 50x50 cm.



4 Pouch Wendy pink 22x16x3 cm.



6 Paper plate Maggie white & Wendy pale blue D: 23 cm. 10 pcs. Paper cup Wendy pale blue & Maggie white H: 9 cm. 10 pcs.



5 Teddy Kristine pale pink H 22,5 cm.



7 Shoulder bag Wendy pink 49x40x10 cm.



8 Quilted cushion Kristine pale pink 40x40 cm.



9 Quilted cushion Fay green & Fay pink 40x40 cm.



10 Quilted cushion Wendy pink 40x40 cm.



11 Quilt Kristine pale pink 100x140 cm & 140x220 cm. Machine made. Backside Fay pink.



12 Quilted cushion Flowerpot green w. app. 40x40 cm.



13 Quilt Wendy pink 140x220 cm. Machine made. Backside Fay green.



1 Apron Kristine pale pink, Wendy pink & Lace pink. One size.



2 Bread basket napkin Wendy green, Wendy pink & Fay green 40x40 cm.



3 Washing up liquid Elisa 500 ml.



4 Tin flour shaker Wendy pink H: 9,5 D: 6,5 cm.



5 Boxcushion removable cover Wendy green 40x40 cm.



6 Tablecloth Wendy pink 150x150 cm.



7 Tablecloth Fay green 145x270 cm. Angelina pink 145x270 cm.



8 Boxcushion removable cover Kristine pale pink 40x40 cm.



9 Cushion cover Lace pink 50x50 cm.



10 Tea towel Lace pink, Wendy green, Wendy pink, Ida pink & Fay green. 50x70 cm.



11 Grill glove Kristine pale pink.



12 Thermo bottle Wendy white 28 cm. 800 ml.



13 Ironing board cover Wendy pink.



14 Pot holder Wendy pink app. D: 21 cm.



15 Tin boxes Round Wendy L: 16x15,5 cm. Set of 3.





ALMOST OPPOSITE *Attraction*

Every once in a blue moon, nature throws up the most unexpected but delightful of pairings – who could have predicted chocolate and chilli, for example? Some wonderful, yet improbable combinations are the result of a creative genius toil and tears – Bach’s counterpoint springs to mind. Yet others are the simple result of magical serendipity, or in Greengate’s case, a rather cluttered studio.

For quite some time, our designers had been working on giving a contemporary twist to some of the most beautiful examples of floral patterns from the Arts and Crafts period. By chance, they were also working on a new star pattern for their boys’ collection. And thanks to a table overflowing with both designs, we hit on the Maggie and Star Multi combination.

The central design in Maggie still retains its Provençal Arts and Crafts era’s roots, but the more busy and darker colourways have been stripped back to give it new light and boldness to suit today’s appetites. Combining Maggie with a Star multi pattern with matching colourways creates a visual counterpoint which works in ways none of us could ever have predicted.



4 Apron Maggie blue. One size.



1 Bread basket napkin Maggie blue 40x40 cm.



2 Tea towel Maggie blue 50x70 cm.



3 Pie dish blue & red with dot.



5 Storage bag Maggie blue 30x34 cm.



6 Bread basket Maggie blue H: 13 D: 23 cm.



7 Teaspoons Millie red spot H: 18 cm. 6 pcs.



8 Oven Dish set in red dot & blue dot. Set of 2 pcs.



9 Tin flour shaker Maggie pale blue H: 9,5 D: 6,5 cm.



10 Grill glove Maggie blue.



11 Paper napkin, Millie blue 20 pcs.



12 Washing up liquid Millie 500 ml.



13 Ironing board cover Maggie blue.



14 Plate Spot red & Maggie blue D: 20,5 cm.



15 French latte cup Spot red, Maggie blue & Millie white H: 12 cm D: 8 cm.



17 Tin boxes Maggie blue. Large 30x20,5x17 cm. Set of 3.



18 Stoneware giftbox Mini latte Maggie. 4 pieces. As shown above.



16 Latte cup Spot red, Maggie blue & Millie white H: 9 cm.





- 

1 Latte cup Maggie white, Spot yellow & Spot red, Star multi & Victoria multi H: 9 cm.
- 

4 Mini Latte cup Star multi & Maggie white H: 9 cm.
- 

2 Soup bowl Maggie white & Star multi D: 15 cm.
- 

3 French bowl Spot yellow & Spot red D: 13,5 cm.
- 

5 Teacosy Fay green.
- 

6 Thermo bottle Maggie yellow 28 cm. 800 ml.
- 

7 Tea towel Maggie yellow & Star multi 50x70 cm.
- 

8 Goose, Star multi H: 41 cm.
- 

9 Plate Maggie white, Spot red & Star multi D: 20,5 cm.
- 

10 Bread basket napkin Maggie yellow & Star multi 40x40 cm.
- 

13 Apron Child Star multi. One size.
- 

11 Jug Star multi & Spot yellow 1 L. H: 16 cm.
- 

12 Grill glove Maggie yellow.
- 

14 Paper napkin Maggie white, Star multi, & Naomi red. 20 pcs.
- 

15 Teapot Maggie white H: 15,5 cm.



1 Scarf linen pink & yellow 50x190 cm.



2 Melamine mug Maggie yellow, Star multi, Fay pink & Maggie blue H: 10 cm.



3 Melamine tray Maggie blue square 48,5x29,5 cm.



4 Melamine salad bowl Maggie blue D: 25 cm.



5 Melamine Dinner plate Fay pink D: 25 cm.



6 Ripstop Washbag Maggie blue 24x18x11 cm.



8 Ripstop purse Fay pink & Maggie blue 22x12x2,5 cm.



9 Melamine plate Maggie yellow, Fay pink, Star multi & Maggie blue D: 20 cm.



7 Ripstop Washbag Fay pink 43x35x12 cm.



10 Key ring Bird Fay pink. 7x7 cm.



12 Ripstop Weekendbag Maggie blue 33x51x25 cm.



13 Ripstop Handbag Maggie blue 41x28x14 cm.



11 Ripstop Schoolbag Fay pink & Maggie blue 30x37x18 cm.



14 Melamine bowl Fay pink, Maggie blue & Star multi D: 14 cm.



15 Popcorn box Maggie ass. Set of 9.



16 Ripstop travel purse Maggie blue, Fay pink 14x8x4,5 cm.



17 Ripstop Pencil case Fay pink & Maggie blue 22x12x2,5 cm.





17 Bunting Maggie blue
L: 120 cm.



1 Quilted cushion Maggie blue embroidery 40x40 cm.



2 Quilted cushion Birdhouse pink w. app. 40x40 cm.



3 Quilted cushion Maggie pink w. emb. 40x40 cm.



4 Quilted cushion Maggie green embroidery 40x40 cm.



5 Quilted cushion Maggie pink 40x40 cm.



6 Cushion cover Teacup Maggie w. app. 40x40 cm.



7 Pouch Maggie pale pink & Maggie yellow 22x16x3 cm.



9 Elephant Maggie yellow
H: 20,5 cm.



10 Tin lunch box Maggie pink
10,5x15,5x12 cm.



11 Quilted cushion Maggie yellow 50x50 cm.



8 Paper notebook
Millie red 22x17 cm.



12 Quilted beachmat Maggie yellow 70x180 cm.



13 Tin easter egg Maggie Set of 3. L: 13x8x9 cm.



14 Quilted sleeping bag Maggie pink 70x180 cm.



15 Quilt Maggie pink 100x140 cm & 140x220 cm.
Machine made. Backside Fay pink.



16 Quilt Maggie yellow 140x220 cm. Machine
made. Backside Fay pink.

CATCH *Twenty Eleven!*

Classic Greengate style, through and through, but not a flower to be seen! Stars and squares, blues and reds – the Greengate way can even make it past the boys' bedroom door. This year sees the introduction of some exciting new products with a distinctly outdoor, active feel.



1 Quilted cushion Peter blue 50x50 cm.



2 Quilted cushion Anchor blue/red 40x40 cm.



3 Quilted cushion 9 star blue 50x50 cm.
Quilted cushion Lukas red 50x50 cm.



4 Quilted beachmat Peter blue 70x180 cm.



5 Elephant Star pale blue H: 41 cm.
Teddy Star blue H: 41 cm.



6 Quilted cushion round Peter blue 50x50 cm.



7 Melamine mug
Lukas pale blue.
Also in green &
red H: 10 cm.



8 Quilted purse
Star red
13x10,5 cm.



9 Alarm clocks Star blue H: 12 cm.



10 Quilted fish
Peter set of 3.



11 Melamine plate Lukas pale blue D: 20 cm.
Also in green & red.



13 Melamine bowl Lukas pale blue D: 14 cm.



12 Tin lunch box Star blue 10,5x15,5x12 cm.



14 Quilted cushion Peter blue w. app. 40x40 cm.



15 Quilt Peter blue 140x220 cm. Machine made.
Backside Ida dark blue.



16 Quilt Peter blue 100x140 cm & 140x220 cm.
Backside Ida dark blue.



In a country where 'high-speed transportation' means your bicycle has more than three gears, you don't have to remind a typical Dane to slow down and enjoy nature. Most people live within a short cycle's distance to the sea, and in the Summer, the beach-bound roads are overflowing with hamper-laden back carriers and the cheerful tinkle of bike bells. And while the Danes might be known for eating lots of fish, the secret truth is that it is the strawberry that becomes the national delicacy in summertime.

The Martha and Peggy collections were designed with this lifestyle very much in mind. Soft greens, gently interspersed with more vibrant colours, combine beautifully with the summer outdoor life. The new collections are also designed to match seamlessly with our previous classic Greengate Claire collection, so if your bike has enough gears, you can bring even more to the beach than last year!



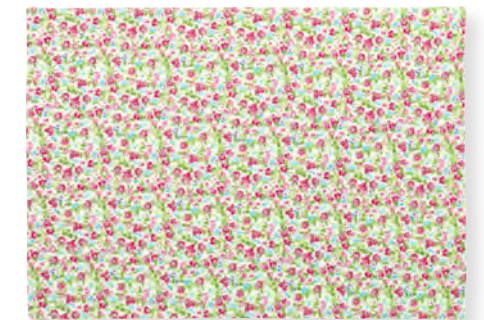


1 Apron Martha white, Fay green & Peggy white. One size.



2 Quilted dinnermat Martha white 40x50 cm.

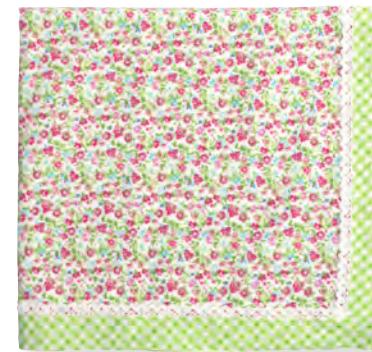
3 Bunting Peggy white L: 120 cm.



4 Placemat Peggy white 50x70 cm.



5 Tablecloth Martha white 150x150 cm.



6 Tablecloth Peggy white 150x150 cm.



7 Plate Sophia flower D: 20,5 cm. Also dinner plate Sophia flower D 25 cm. Soup plate Sophia flower D: 23,5 cm.



8 Creamer Sophia white H: 8x12 cm.



9 Storage bag Fay green 30x34 cm.



10 Teapot Sophia white D:15,5 cm.



11 Dinner plate Spot green D: 25,5 cm.



12 Ironing board cover Peggy white.



13 Mug Sophia white H: 9,5 cm. spoon Sophia white L: 15,5 cm.



14 Cup/Saucer Sophia white H: 8,5 cm.



15 Boxcushion removable cover Peggy white 40x40 cm.



1 Cushion cover Flowerpot green w. app. 40x40 cm.



2 Cushion cover Laundry white w. app. 40x60 cm.



3 Quilted cushion Martha green embroidery 40x40 cm.



4 Quilted cushion Martha pink embroidery 40x40 cm.



5 Cushion cover Owl white w. app. 40x40 cm.



7 Flower in pot Peggy white, Small L: 22 Large L: 36 cm.



6 Elephant Ida pink Small H: 19 L: 27 cm. Peggy white, large H: 22 L: 30 cm.



8 Quilted cushion Martha white 40x40 cm.



9 Quilt Martha white 140x220 cm & 180x230 cm & 250x260 cm. Machine made. Backside Nina pink.



10 Quilted cushion Martha white 50x50 cm.



11 Cushion cover Lovebirds green w. app. 40x60 cm.



It's fun to mix! Peggy, Martha, Sophia, Claire, Green and Red Check, Spot green – even green Fay can be enjoyed all at once – in fact the more the merrier. With Greengate's colourways reaching across so many patterns and products, the combinations are endless, but the result is always one of carefree harmony. Just let yourself go!





3 Teapot Spot green D: 15,5 cm.



6 Cup/Saucer Claire multi & Spot green
H: 8,5 cm.



Four decorative bowls are shown in a 2x2 grid. The top-left and top-right bowls are white with a red floral pattern and a red rim. The bottom-left and bottom-right bowls are light green with white polka dots and a green rim.

Three square tins are stacked vertically. The top tin has a red and white geometric pattern on its lid and a small floral pattern on its sides. The middle tin has a red and white geometric pattern on its lid and a larger floral pattern on its sides. The bottom tin has a red and white geometric pattern on its lid and a large, detailed floral pattern on its sides. The tins are made of metal and have a slightly worn appearance.

A pair of slippers with a vibrant floral pattern in shades of pink, red, and green on a light background. The slippers are shown from a side-on perspective, highlighting their soft, padded construction.

A green plate with white polka dots.





4 Apron Bella vintage. One size.



1 Tablecloth Elisa vintage 145x270 cm.



2 Oven dish Spot beige small & large. Set of 2 pcs.



3 Tablecloth Fay beige 150x150 cm.



5 Bread basket napkin Naomi beige w. app. 40x40 cm.



6 Paper napkin Chloé off white & Naomi beige 20 pcs.



7 Tea towel Bella vintage, Naomi beige & Fay beige 50x70 cm.



8 Bread basket napkin Fay beige & Bella vintage 40x40 cm.



9 Handwash Bella 500 ml.



10 Teapot Naomi beige H: 15,5 cm.



11 Wine glass w. cutting smoke H: 18 cm. Also in clear. Glass w. cutting smoke H: 11 cm.



12 Grill glove Fay beige.



13 Egg cup Tilly off white & Spot beige H: 6,5 cm.



14 Espresso cup/saucer Spot beige H: 6 cm.



15 Cup/Saucer Tilly off white H: 8,5 cm.



16 Cup/Saucer Spot beige H: 8,5 cm.



17 Plate Tilly off white & Naomi beige D: 20,5 cm. (also in dinner plate D: 25 cm).



18 Creamer Chloé off white H: 12 cm.



19 Water glass w. etching pattern smoke H: 10,5 cm.



20 Sugar pot Tilly off white H: 10 cm.



21 Latte cup Tilly off white, Chloé off white & Naomi beige H: 9 cm.





Wrapping paper assorted Wendy
pink, blue and green, 50x200 cm.



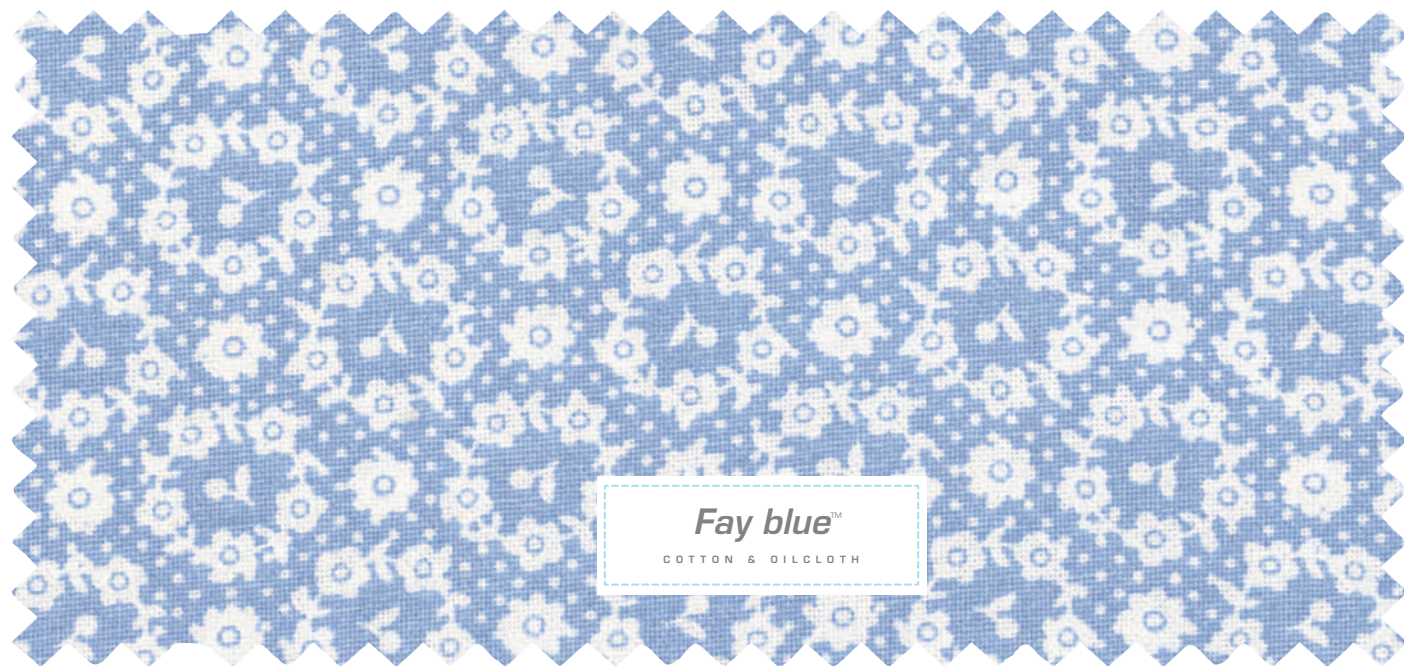
Ribbons:

- Green w/dot 9 mm x 5 m.
- Pink w/dot 9 mm x 5 m.
- Yellow w/dot 9 mm x 5 m.
- Fay Pink 15 mm x 5 m.
- Pale Blue w/dot 9 mm x 5 m.
- Green w/dot and lace 22 mm x 5 m.
- Nina Pink 12 mm x 5 m.
- Star Multicolour 10 mm x 5 m.



Gift tag/card Maggie
assorted 24 pcs in cloth bag.

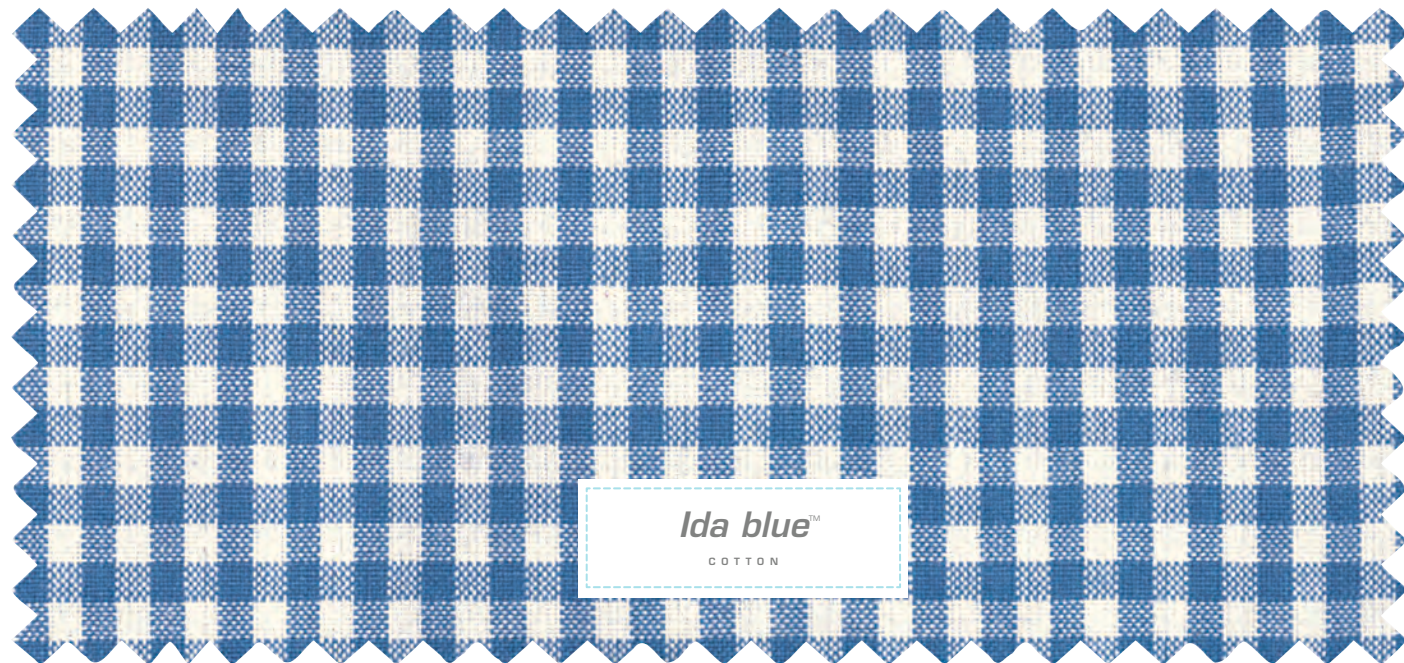




Fay blue™
COTTON & OILCLOTH

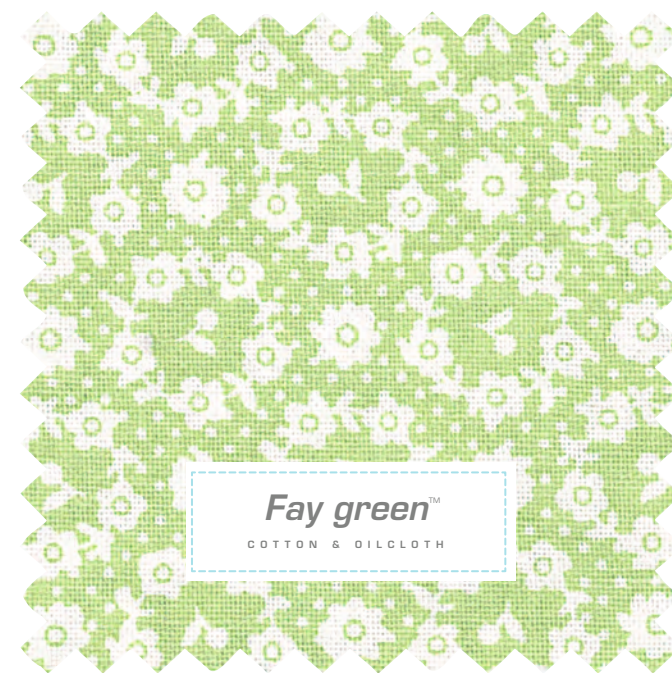


Ginger blue™
COTTON



Ida blue™
COTTON







Kristina pale pink™
COTTON & OILCLOTH



Kristina pale blue™
COTTON & OILCLOTH

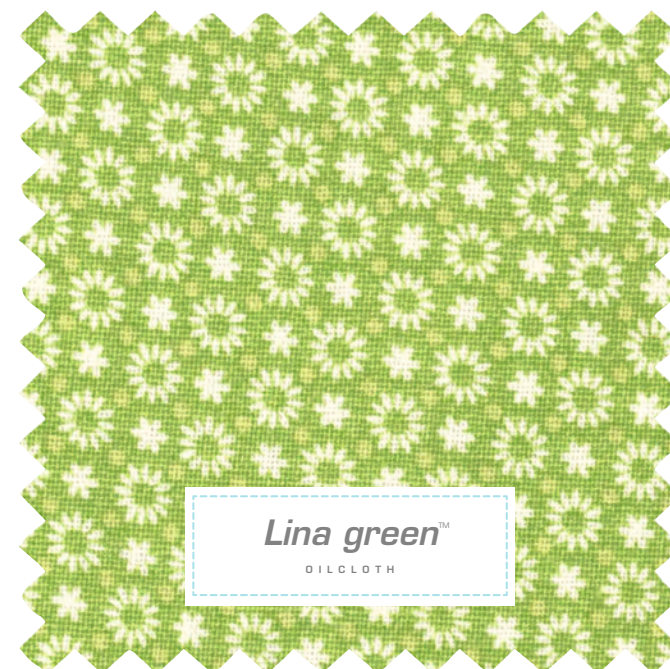


Asta pink™
COTTON



Ida green™
COTTON







GreenGate Head Office
Strandvejen 781
DK 2930 Klampenborg
Denmark

Tel +45 39 960 333
Fax +45 39 960 339
E-mail gg@greengate.dk
www.greengate.dk